

Warszawa, Wola

Wohnung 50 m²

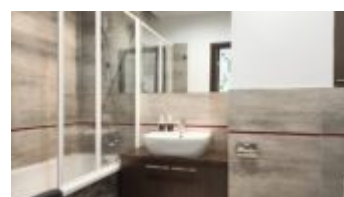
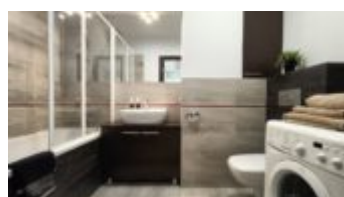
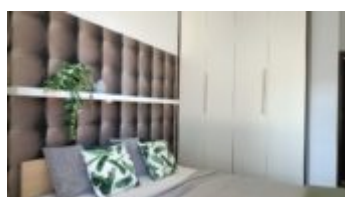
50
meter

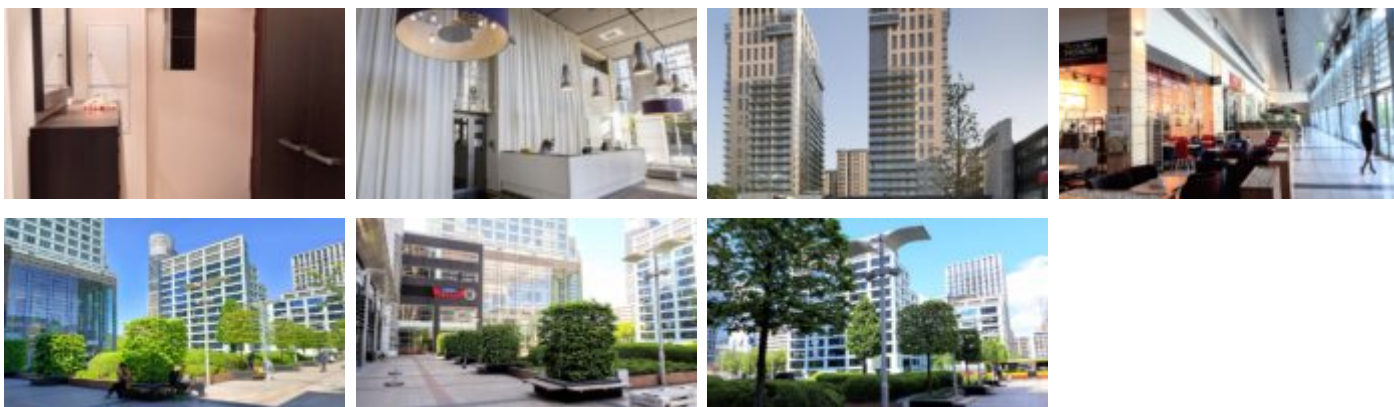
2
zimmer

6
boden

Vermietung

Preis **3 500 PLN**
preis pro m² **68 PLN**





Angebotsbeschreibung:

Bright, 2-room apartment, located on the 6th floor, in the prestigious Platinum Towers location next to Plac Europejski.

The apartment is available, we invite you to view.

RENT | PLATINUM TOWERS – GRZYBOWSKA | 50 m | 2 ROOMS WITH LARGE BALCONY

BUILDING: Platinum Towers are luxurious buildings with modern architecture located in the city center, at Grzybowska Street, in the vicinity of Rondo Daszyńskiego. Two characteristic, modern towers house prestigious apartments, a shopping and service arcade (restaurants, service premises, Biedronka market – accessible from the reception level, without the need to leave the building) and a 3-level parking lot. Residential complex visavis Browary Warszawskie, next to Plac Europejski.

PLATINUM TOWERS is one of the most prestigious projects implemented in the very center of Warsaw. The investment is a complex of two 22-story apartment towers, which, combined with the adjacent Hilton Hotel, constitute an exclusive business, recreation and residential center. Residents of Platinum Towers have access to the hotel infrastructure, including the prestigious Spa Center and the Holmes Place Fitness Club. In order to ensure comfort and safety, the entire complex has a 24-hour reception, high-speed elevators and a monitoring system.

APARTMENT: Comfortable, 2-room apartment located on the 6th floor, in tower A. It consists of a living room with a modern kitchenette, a separate bedroom and a bathroom.

- Living room for your own arrangement (no movable furniture)
- The annex has built-in furniture and household appliances.
- In the bedroom there is a free-standing wardrobe and a double bed with two cabinets.
- In the hall there is a built-in wardrobe with a chest of drawers and a mirror.

Rent price PLN 3500/month. Parking space in the underground garage: PLN 300

Administrative fees: PLN 1,440. The tenant pays electricity according to consumption.

Deposit 5000 PLN

As a real estate agency, we charge a commission for our brokerage services. This announcement is for information purposes only and does not constitute an offer within the meaning of Article 66 § 1 of the Civil Code.

LOCATION: The prestigious location of the property in the very center of Warsaw provides access to the full city infrastructure. Within walking distance there are numerous retail and service points,

entertainment and business centers – Warsaw Spire and Rondo 1. An excellent communication point providing quick access to both the city center and other districts of Warsaw. Nearby there are numerous bus and tram stops, to the metro 6 minutes walk – Rondo Daszyńskiego stop.

Du bist an dieser Immobilie interessiert
kontaktiere uns für einen Termin.

Ruf uns an
+48 22 838 24 71

Eine Nachricht senden
biuro@warsawproperties.pl