

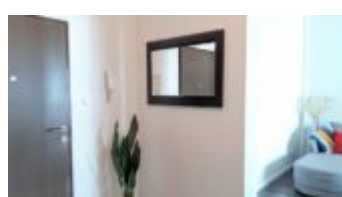
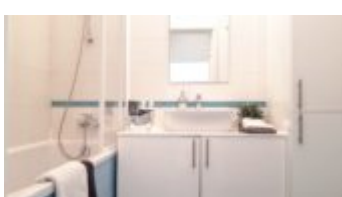
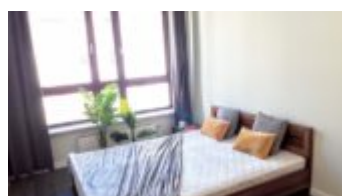
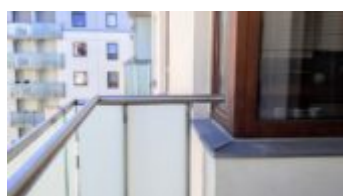
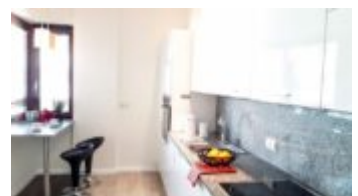
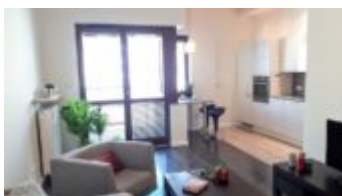
Warszawa, Wola

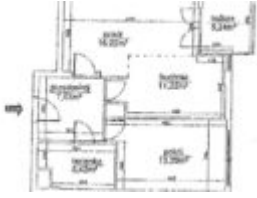
Apartment 53 m²

53 meters | 2 rooms | 6 floor

Sale

Price **1 351 500 PLN**
price for m² **25 395 PLN**





Description:

Spacious, 2-room apartment in a modern apartment building, 8 minutes walk to Rondo Daszyńskiego metro station.

GIEŁDOWA | KAROLKOWA | WALK TO RONDO DASZYŃSKIEGO | 53 m | 2 ROOMS | BALCONY | FULLY EQUIPPED | 6TH FLOOR

BUILDING: Capital Art housing complex built in 2014, in an excellent location at 4 Giełdowa Street / Karolkowa, just 5 minutes from the city center, in the third line of development, thanks to which the estate is really quiet. Modern design and high standard of workmanship (stone, glass, steel) give the estate a prestigious appearance. The estate has 24-hour security and reception. The internal area is nicely developed, there is a playground for children. Downstairs in the building there is a grocery store (Żabka), a cafe, a hairdresser, a wine shop, a sushi bar. The building can be entered from both Giełdowa Street and Siedmiogrodzka Street.

APARTMENT DESCRIPTION: Sunny, quiet, fully equipped apartment located on the 6th floor. Equipped with RTV and household appliances.

The apartment consists of:

- Living room connected to a bright kitchen (fridge, dishwasher, stove, oven, microwave) with a large balcony window and access to the balcony (5.24 m²),
- Separate, large bedroom,
- Comfortable bathroom with bathtub and washing machine,
- Hallway with a spacious wardrobe.

Currently, the apartment has no furniture.

Administrative rent: approx. PLN 1,000 / month.

Convenient parking space in the underground garage additionally payable PLN 100,000.

As a real estate agency, we charge a commission for the brokerage service. This announcement is for information purposes only and does not constitute an offer within the meaning of Article 66 § 1 of the Civil Code.

SURROUNDING AREA: Capital Art Apartments is located at Giełdowa Street, near Karolkowa Street. Just 5 minutes from the city center, in the second line of development. From this place, everything is close, regardless of whether we use a car, tram, bus, bike or walk. The estate is located in close proximity to the center of Warsaw, in one of the most dynamically developing districts of the city. It is surrounded by modern residential buildings, right next to the new business center and renowned office buildings and fashionable restaurants. Karolkowa and Grzybowska streets are around the corner, and Rondo Daszyńskiego and a metro stop are within walking distance. Full city infrastructure in the area – restaurants, shops, services.

COMMUNICATION: The Capital Art Apartments building is located 8 minutes walk from the Rondo Daszyńskiego metro station, there are also numerous tram and bus stops nearby.

You are interested in this property

contact us and make an appointment.

Call us

+48 537 500 745

Send message

info@warsawproperties.pl