

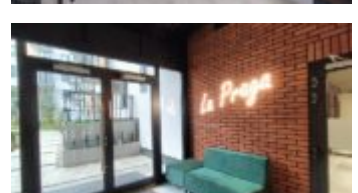
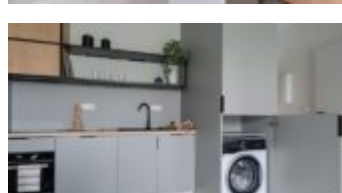
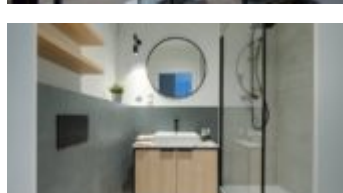
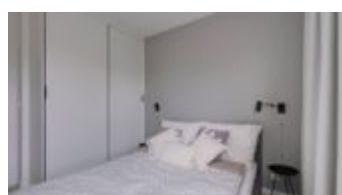
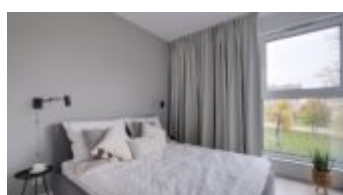
Warszawa, Praga-Północ

# Apartment 35 m<sup>2</sup>

35 meters | 2 rooms | 1 floor

Rent

Price **3 055 PLN**  
price for m<sup>2</sup> **87 PLN**





## Description:

For rent a new, comfortable 1-bedroom apartment – living room with kitchenette + bedroom, with an area of 35.3 m, located in a new building on Radzymińska Street, in a quiet, green area in Old Praga. Internet included in the rental price!

RADZYMIŃSKA | SZMULOWIZNA – OLD PRAGA | NEW 1-BEDROOM APARTMENT WITH A LOGGIA BALCONY – 3.48 M | 1ST FLOOR WITH A WEST VIEW ON THE SURROUNDING ESTATES | BEDROOM WITH A 160X200 BED | EQUIPMENT – NEW FURNITURE AND HOUSEHOLD APPLIANCES | 35.3 M

**BUILDING:** The new LA PRAGA building, at Radzymińska Street 30, is an elegant tenement house surrounded by greenery. Inside, a carefully planned green courtyard, around which there are numerous squares with playgrounds and an outdoor gym. The building is equipped with elevators and an underground car park, the whole is fenced, monitored, with 24-hour security. Around it are housing estates and the historic buildings of Old Praga. Nearby there is a Żabka market, bistro, playground, kindergarten and public transport (bus, tram). Residents benefit from the care of a professional leasing office and property manager. Ask about other apartments available in this building!

**APARTMENT DESCRIPTION:** Comfortable apartment in a new building located on the 1st floor with a large, sunny loggia of 3.48 m<sup>2</sup>, with an eastern view of the square and the surrounding buildings.

- Living room – comfortable, fold-out sofa, table + chairs, TV cabinet, curtains – with access to the loggia
- Separate bedroom – bed with mattress (160 cm x 200 cm), bedside tables, large wardrobe, curtains
- Kitchen in the form of an annex – dishwasher, oven, induction hob, fridge
- Bathroom with shower and washing machine
- There is a wardrobe in the hall
- Comfortable loggia balcony – 3.48 m

Large windows provide natural light and good interior lighting, and the living room has access to the balcony.

**FEES:** Rent – PLN 3,055.00 / month + administrative fee – PLN 446 / month + advance payments for utilities (water, heating, garbage collection) – PLN 280 / month,

The rental price includes Internet 500/100 Mbps

**TOTAL:** 3781 PLN

Optional: parking space in the garage, storage room.

The tenant additionally pays for electricity according to consumption and excess consumption of utilities.

Refundable deposit: PLN 3781

As a real estate agency, we charge a commission for our brokerage services. This announcement is for information purposes only and does not constitute an offer within the meaning of Article 66 § 1 of the Civil Code.

**SURROUNDING AREA:** LA PRAGA is a modern investment located at Radzymińska Street, in the Praga district – in the quiet Szmulowizny housing estate. Within walking distance of numerous shopping and entertainment centers – Centrum Koneser and Galeria Wileńska. Around the estate there is a perfectly developed urban infrastructure: numerous educational, administrative and medical facilities, shops, markets, shopping malls, sports and recreation centers, which significantly facilitate everyday functioning.

**TRANSPORT:** bus stop by the building, tram lines nearby. Szwedzka metro station – 12 minutes walk. Bicycle paths marked on Radzymińska Street. Close to Warszawa Wschodnia PKP station.

---

**You are interested in this property**

**contact us and make an appointment.**

**Call us**

**+48 537 500 745**

**Send message**

**info@warsawproperties.pl**