

Łódź, Łódź-Widzew

Apartment 35 m²

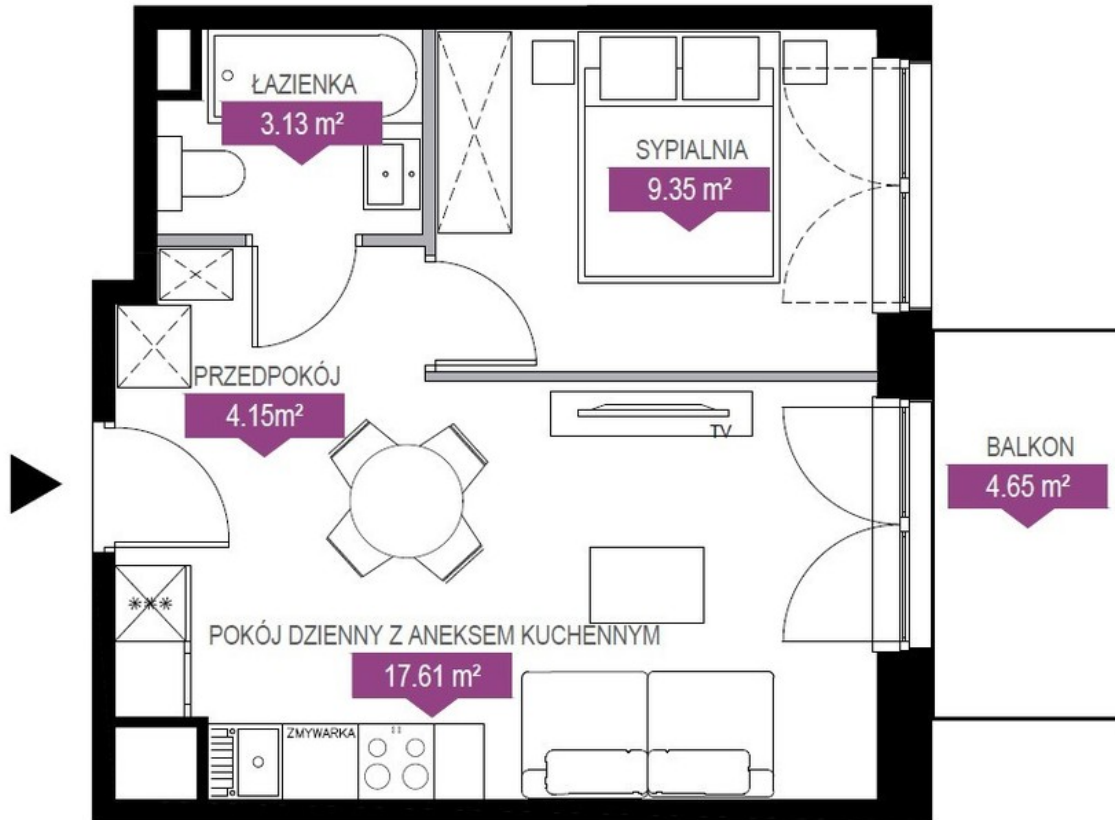
35
רמט

2
ה'גוקופ

2
קמזק

Sale

בתימ 409 285 PLN
מ² אז הניס 11 500 PLN



Description

Information about the estate: Developer Echo Investment is building an intimate residential estate at 17 Wodna Street consisting of 2 5-story buildings, with elevators and an underground garage, as well as a green patio inside the estate.

APARTMENT IN DEVELOPER CONDITION! – ASSIGNMENT OF CONTRACT

Location: The estate is located in the center of Łódź – a few minutes walk to Piotrkowska Street. The proximity of the Łódź Fabryczna station and Piłsudskiego and Kopcińskiego avenues ensures efficient and fast communication. Nearby there is Galeria Łódzka, an interactive museum in EC1 and a beautiful park with the Palm House. The investment area includes schools, numerous medical facilities, a city market and shops.

APARTMENT DESCRIPTION: New, compact 2-room apartment with a balcony, in developer's standard, 2nd floor with a view of the inner areas of the estate.

A bright and quiet apartment located in the new building A with a view of the green patio. Window direction: east

The apartment consists of:

- a bright room with a kitchenette with access to the balcony – 17.61 m
- separate bedroom – 9.35 m
- bathroom – 3.13 m
- hall – 4.15 m
- large balcony – 6, 65 m.

Apartment in developer standard. Excellent investment offer.

You are interested in this property
contact us and make an appointment.

Call us

+48 537 500 745

Send message

info@warsawproperties.pl