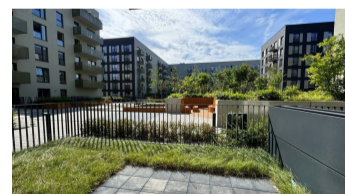
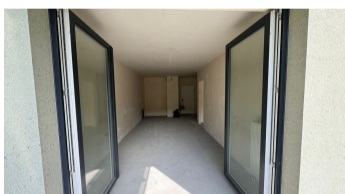
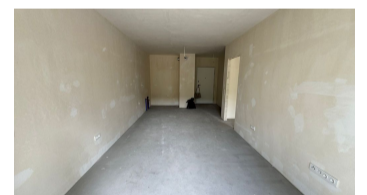
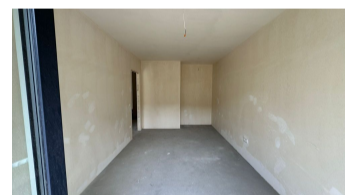
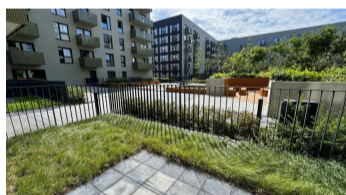
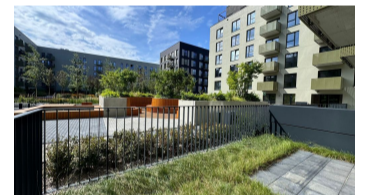
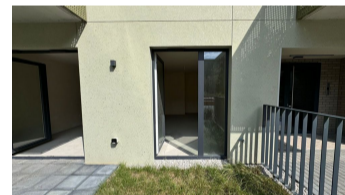
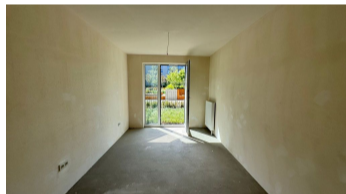


Łódź, Łódź-Widzew
חטש 48 m²

48 | 2 | 0
מירטמ | מירדח | המוק

תורכמ

ריחמ 470 000 PLN
מ² הדיחיל ריחמ 9 611 PLN



העצה רואית:

ABOUT THE PROJECT: Developer Echo Investment has built an extraordinary project on the site of the former Karol Scheibler factory – a housing estate consisting of 20 buildings for various purposes, of which 14 are adapted historical buildings – Its heart is the historic, Art Nouveau CHP plant and the multifunctional city square around. Location of the housing estate: Center of Łódź – between Piotrkowska, Tymienieckiego, Kilińskiego and Milionowa streets.

2-ROOM APARTMENT – IN DEVELOPER'S STANDARD! – apartment collected, keys at the Agency!

APARTMENT DESCRIPTION: New, 2-room apartment with a garden and a terrace, in developer's standard. Very favorable layout! Apartment located in the new building F, on the ground floor (with a view of the green patio).

The apartment consists of:

- a bright room with a kitchenette with access to the terrace - 22.37 m
- a separate bedroom with a window - 16.73 m
- a bathroom - 4.32 m
- a hall with space for a wardrobe - 4.10 m
- a garden (20 m) with a terrace (6 m) - additional space overlooking the internal green patio

The apartment is in a developer standard. An excellent investment offer.

As a real estate agency, we charge a commission for the brokerage service. This announcement is for information purposes only and does not constitute an offer within the meaning of art. 66 § 1 of the Civil Code.

ESTATE: Fuzja is a new urban space friendly to live, work and relax. The project will consist of four residential buildings with over 600 premises, as well as offices with a total area of approximately 40 thousand sq m. The historic buildings will also have space for services, shops and restaurants. New city squares, common spaces and green areas will be created, which will occupy almost 4 ha. Residents and users of Fuzja will be able to take advantage of numerous amenities, including car sharing services, bike paths, bike service stations, parcel lockers and electric chargers. All this will make Fuzja - a well-thought-out, exceptional investment in every detail - a unique place on the map of Łódź, attractive to residents and tourists.

הז סכנב ןינעמ התא מאה

השיגפ ועבקו רשק ונתיא ורצ.

ונילא ורשקתה אנא
+48 537 500 745

העודה חלש
info@warsawproperties.pl