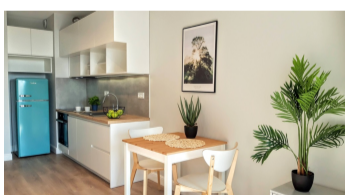


Warszawa, Mokotów
חוטש 28 m²

28 | 1 | 4
מירטמ | מירדח | המוק

תורכמ

ריחמ 590 000 PLN
מ² הדיחיל ריחמ 21 071 PLN



העצה רואית:

Modern studio with a large balcony - Służewiec, ul. Komputerowa/Cybernetyki.
CYBERNETYKI | SŁUŻEWIEC | ELEGANT STUDIO | 4TH FLOOR | LARGE BALCONY | SOUTH VIEW | BEDROOM WITH A 160X200 BED | EQUIPMENT - FURNITURE AND HOUSEHOLD APPLIANCES | WASHER-DRYER | 28 M
BUILDING: The new ATRIUM MURAPOL estate, at ul. Komputerowa/corner of Cybernetyki, consists of two 7-story buildings equipped with elevators. Inside the estate there is a green patio with a playground for children. Surrounded by new housing estates and office buildings with numerous shops, restaurants, bars, bakeries. To the Mokotów Biznes Park office center and tram stops - 300 m walk. Bus line 317 stops next to

the building.

STUDIO: Perfectly designed and modernly equipped comfortable studio in a new building located on the 4th floor, with a view of the internal patio

- window direction - south

- Separate bedroom - bed with a mattress - 160 cm x 200

- Kitchen - dishwasher, oven, induction hob, stylish Retro fridge

- Living room - small, comfortable sofa, table + chairs, TV cabinet

- Elegant bathroom with a bathtub, shower set, equipped with a washer / dryer

- 2 very large wardrobes

Modern rail lighting, wall lamps, floor lamp - add a modern style to the interior. Large windows with access to the loggia (very quiet view, lots of natural light).

The apartment is fully owned with a land and mortgage register (no encumbrances).

Monthly administrative fee is approx. PLN 530.

The apartment is currently rented, viewing possible after prior arrangement.

As a real estate agency, we charge a commission for the brokerage service. This announcement is for information purposes only and does not constitute an offer within the meaning of art. 66 § 1 of the Civil Code

SURROUNDING AREA: Murapol Atrium Służewiec is a modern investment located at Cybernetyki Street, in the Mokotów district - in a quiet part of Warsaw's Służewiec. Located in the vicinity of the business center of the capital, which provides rich infrastructure in the vicinity. The Murapol Atrium Służewiec estate consists of two 7-storey buildings. To the Galeria Mokotów shopping and entertainment center - 1 km (walk or bus). In the vicinity of the estate there is a well-developed urban infrastructure: numerous educational, administrative and medical facilities, shops, markets, shopping malls, sports and recreation centers, which significantly facilitate everyday functioning.

LOCATION: New Atrium estate at Cybernetyki Street, located in the vicinity of the Służewiec business center. 2.3 km - to the metro to Metro Służew, 1 km to Galeria Mokotów, 300 m to the tram stop, 700 m to PKP Służewiec. Close to Chopin Airport.

הז סכנב ויינועמ התא סאה

השיגפ ועבקו רשק ונתיא ורצ.

ונילא ורשקתה אנא
+48 537 500 745

העודה חלש
info@warsawproperties.pl