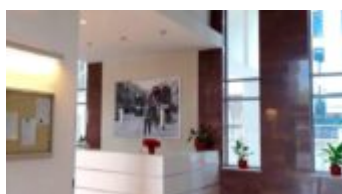
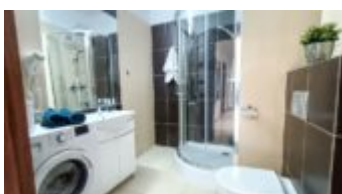
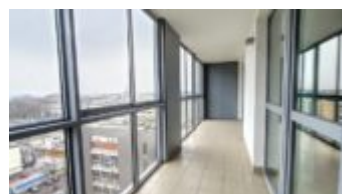


Warszawa, Wola

Apartment 72 m²

4 500 PLN בתים
m² - PLN אז הניס

72 | 3 | 13
רטמ | ה'גוקופ | קמזק



Description

Bright and quiet apartment in a modern housing complex in close Wola, on quiet Skierniewicka Street, right next to the Płocka metro station.

BLISKA WOLA | SKIERNIEWICKA | 72 m | APARTMENT BUILDING | 13TH FLOOR | 2 BEDROOMS | LARGE, GLASS-ENCLOSED BALCONY WITH PANORAMIC VIEW | METRO PŁOCKA

LOCATION: SKIERNIEWICKA CITY is a modern and comfortable complex of residential buildings, put into use in 2010. On the ground floor there is a reception and security of the estate and service premises, in the basement there are parking lots. In the immediate vicinity – an office center around Rondo Daszyńskiego and new residential buildings. Next to it is the Renaissance Tower office building, the Sawa Wola building and the Kasprzaka 49 office building. The elegant elevation, large terraces and glazed winter gardens create an atmosphere of modernity and comfort.

APARTMENT DESCRIPTION: Quiet, bright, located on the 13th floor, 2-bedroom apartment with a view of the city panorama.

- bright living room with large balcony windows, with access to a large balcony, connected to a kitchenette – equipped with a new, fold-out sofa, TV and furniture
- fully equipped kitchen with table and chairs
- spacious bedroom, with a large wardrobe
- second bedroom (now a study) with access to the loggia
- bathroom with shower and washing machine
- modern, large windows provide optimal lighting of the rooms
- balcony – glazed loggia – with exit from the living room and one of the bedrooms – with space for a table and chairs, with a view of the city panorama
- wardrobe – with entrance from the hall

The apartment has been renovated and equipped with new furniture.

A parking space in the underground garage, additional fee: PLN 200 / month

Rent: PLN 4,500. Deposit: PLN 5,700.

Lease for min. 12 months

In addition, the tenant pays administrative rent, heating and advances for water – PLN 1,200/month and electricity according to consumption.

As a real estate agency, we charge a commission for our brokerage services. This announcement is for information purposes only and does not constitute an offer within the meaning of Article 66 § 1 of the Civil Code.

SURROUNDING AREA: The SKIERNIEWICKA CITY apartment building is located in the historic part of Wola, near Płocka, Kasprzaka and Wolska streets. Around it is a perfectly organized district, with shops, services, restaurants, bakeries, sports centers. Nearby is the Dramatic Theater and numerous schools, kindergartens, clinics, hospitals. Wola is a well-organized district, perfectly connected to the city center and other districts.

COMMUNICATION: Quick access to the city center, tram stop and numerous bus stops next to the building. To the metro station Rondo Płocka – 3 minutes, to Rondo Daszyńskiego 15 minutes walk.

You are interested in this property
contact us and make an appointment.

Call us

+48 537 500 745

Send message

info@warsawproperties.pl