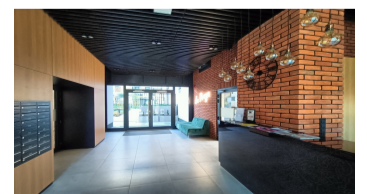
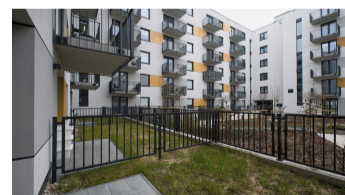
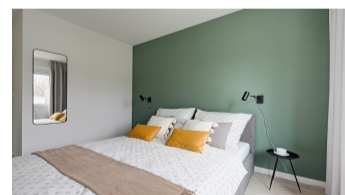
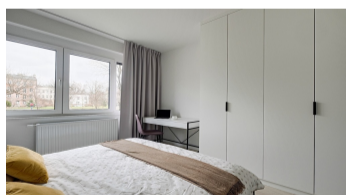
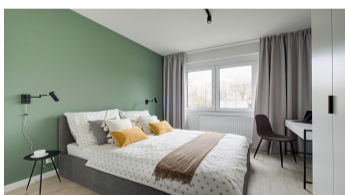
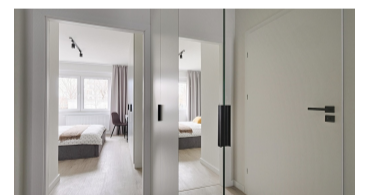
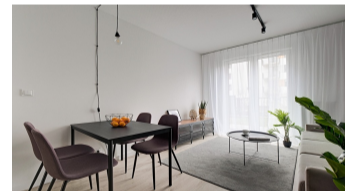


Warszawa, Praga-Północ  
חוטש 40 m<sup>2</sup>

40 מירטמ | 2 מירדח | 0 המוק

הרכשה

ריחמ 3 531 PLN  
מ<sup>2</sup> הדיחיל ריחמ 86 PLN



## העצה רואית:

APARTMENT AVAILABLE, we invite you to view!

For rent a new, comfortable 1-bedroom apartment - living room with kitchenette + bedroom, with an area of 40.54 m2, located in a new building on Radzymińska Street, in a quiet, green area in Old Praga. Internet included in the rental price!

RADZYMIŃSKA | SZMULOWIZNA - OLD PRAGA | 1-BEDROOM APARTMENT WITH SMALL GARDEN | GROUND FLOOR WITH GARDEN ON THE ESTATE | BEDROOM WITH BED 160X200 | EQUIPMENT - NEW FURNITURE AND HOUSEHOLD APPLIANCES | 40.5 M2

**BUILDING:** The new LA PRAGA building, at Radzymińska Street 28, is an elegant tenement house surrounded by greenery. Inside, a carefully planned green courtyard, around which there are numerous squares with playgrounds and an outdoor gym. The building is equipped with elevators and an underground car park, the whole is fenced, monitored, with 24-hour security. Around it are housing estates and the historic buildings of Old Praga. Nearby there is a Żabka market, bistro, playground, kindergarten and public transport (bus, tram). Residents benefit from the care of a professional leasing office and property manager. Ask about other apartments available in this building!

**APARTMENT DESCRIPTION:** Comfortable 1-bedroom apartment in a new building located on the 5th floor with a terrace and a balcony overlooking the green patio of the estate.

- Living room - comfortable, fold-out sofa, table + chairs, TV cabinet, coffee table, desk and chair, carpet, curtains - with access to the terrace
- Bedroom - bed with mattress (160 cm x 200 cm), bedside tables, large wardrobe, curtains
- Kitchen in the form of an annex - dishwasher, oven, induction hob, fridge, washing machine
- Bathroom with shower
- There is a wardrobe in the hall

Large windows provide natural light and good interior lighting, from the living room there is an exit to the terrace

**FEES:** Rent - PLN 3,531.00 / month + administrative fee - PLN 513 / month + advance payments for utilities (water, heating, garbage collection) - PLN 312 / month,

The rental price includes Internet 500/100 Mbps

TOTAL: 4,356 PLN

Optional: parking space in the garage (PLN 300), storage room (PLN 150-250).

The tenant additionally pays for electricity according to consumption and excess consumption of utilities.

Refundable deposit: PLN 4,356

**SURROUNDING AREA:** LA PRAGA is a modern investment located at Radzymińska Street, in the Praga district - in the quiet Szmulowizny housing estate. Within walking distance of numerous shopping and entertainment centers - Centrum Koneser and Galeria Wileńska. Around the estate there is a perfectly developed urban infrastructure: numerous educational, administrative and medical facilities, shops, markets, shopping malls, sports and recreation centers, which significantly facilitate everyday functioning.

**TRANSPORT:** bus stop by the building, tram lines nearby. Szwedzka metro station - 12 minutes walk. Bicycle paths marked on Radzymińska Street. Close to Warszawa Wschodnia PKP station.

## הז סכנב ויינועמ התא מאה?

השיגפ ועבקו רשק ונתיא ורצ.

ונילא ורשקתה אנא  
+48 537 500 745

העודה חלש  
info@warsawproperties.pl