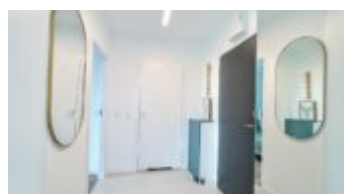
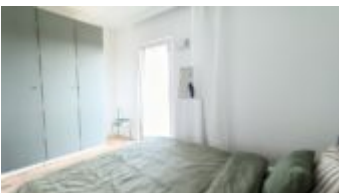


Warszawa, Praga-Północ

Apartment 52 m²

52 | 3 | 5
רטמ | ה'גוקופ | קמזק

4 200 PLN בתים
87 m² אַז הניס PLN





Description

NEW 2-BEDROOM APARTMENT WITH BALCONY | BOHEMA | METRO SZWEDZKA | NEW ESTATE | VIEW OUTSIDE THE ESTATE

For rent 2 bedroom apartment in the new BOHEMA housing estate.

APARTMENT DESCRIPTION: The apartment is located on the 5th floor in a new building (in the 2nd line from Szwedzka Street). It is bright and quiet. The windows face east onto the areas around the estate. The apartment is corner and has a lot of windows.

- living room with kitchenette with 4 windows and access to the balcony – equipped with a large comfortable sofa (fold-out), TV cabinet and coffee table
- a modern, fully equipped kitchenette (dishwasher, oven, induction hob, fridge, freezer) – and an extendable table and 3 chairs
- separate bedroom with a window – equipped with a large bed with a container (150 cm) and a large wardrobe
- second, smaller bedroom – equipped with a single bed and a wardrobe
- comfortable bathroom with bathtub and washing machine
- hall with wardrobe and shoe cabinet
- large, quiet balcony (entrance from the living room and bedroom)

Rent price PLN 4,200/month. Administrative fees with advance payments for utilities (water, heating, garbage collection): PLN 654.

The tenant pays for electricity according to consumption. ADDITIONALLY: parking space in the underground garage: PLN 200/month, storage room: PLN 100/month

Deposit: PLN 4,900

The tenant pays for electricity according to consumption and any underpayments resulting from water and heating consumption (settled once a year based on settlements with the administration). As a real estate agency, we charge a commission for our brokerage services. This announcement is for information purposes only and does not constitute an offer within the meaning of Article 66 § 1 of the Civil Code.

BUILDING; New building, commissioned in 2021, in the Bohema estate – Strefa Praga. Equipped with modern elevators and underground parking.

Around the building there is a modern housing estate, lots of greenery, playground for children.

There is no car traffic on the estate (underground car parks have access directly from the street), which affects the safety of residents and acoustic comfort in the apartments.

BOHEMA – Strefa Praga is a unique urban project that fits into the revitalization program of Warsaw's Praga. It is being built on the premises of the 19th century Pollena cosmetics factory on Szwedzka Street. Here, residential, commercial, office and cultural space intertwine, creating a new quality of life.

Residents will find plenty of amenities and attractions here to brighten up their daily lives. Residential

buildings, offices, shops, cafes, service points and entertainment venues are being built on an area of over four hectares, and the 19th-century factory building will gain new life. It will be a public space for artistic activities, such as concerts, performances and an outdoor cinema. Numerous squares of various types, a wide shopping avenue and a vast area around the chimney will soon fill this place with crowds.

TRANSPORT: The new SZWEDZKA metro station and bus stops are located near the estate. The main communication arteries of the city are nearby – Al. Solidarności, Żaba Junction – providing quick access to many districts of the city.

You are interested in this property

contact us and make an appointment.

Call us

+48 537 500 745

Send message

info@warsawproperties.pl