

Warszawa, Śródmieście

## Apartment 36 m<sup>2</sup>

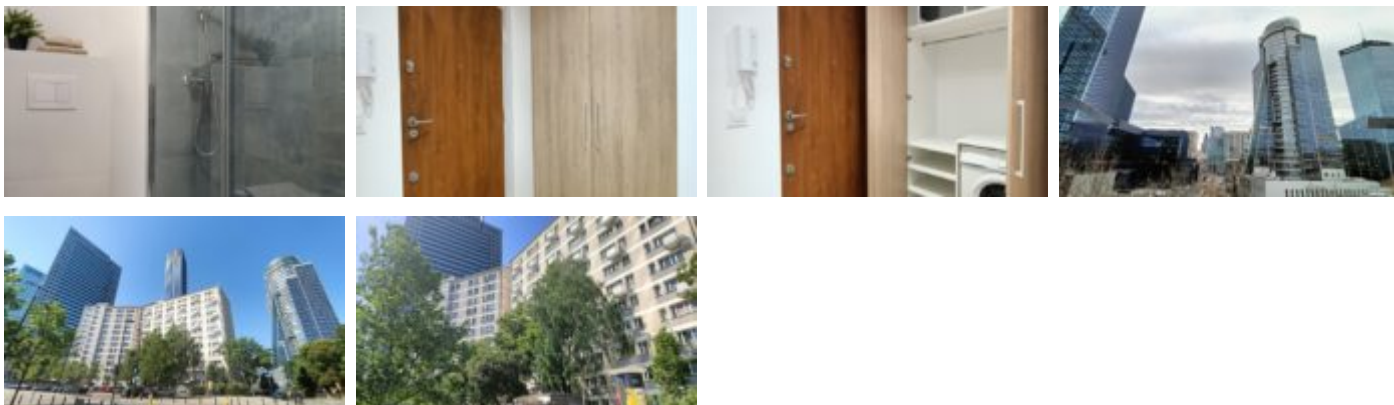
36  
רמ

2  
ה'גוקופ

6  
קמזק

בתימ 3 800 PLN  
מ<sup>2</sup> אז הניס 105 PLN





## Description

EMILII PLATER | ŚWIĘTOKRZYSKA | PLAC GRZYBOWSKI – TOP LOCATION | STYLISH 2 ROOMS | NEW – AFTER RENOVATION | FULLY EQUIPPED

A unique view from 5 windows of the modern buildings of Śródmieście.  
The apartment also has a small balcony.

**BUILDING:** Characteristic Y skyscraper in the very center of Warsaw, at the intersection of Świętokrzyska and Emilii Plater streets. Equipped with 6 elevators. Reception on the ground floor of the building. Building after modernization of risers, media, facade and replacement of windows and glazing. In very good technical condition. In front of the building a bay with parking (paid parking zone). Unique location – 2 minutes to the Palace of Culture, near the main arteries of the city and shopping and catering passages.

**APARTMENT:** Completely new – after reconstruction and general renovation – two-room, comfortable apartment located on the 6th floor, with a peaceful view to the west and north – to the modern development of Śródmieście.

- a bright living room with a bright kitchen with access to the balcony, equipped with a comfortable fold-out sofa
- a completely new kitchen fully equipped with household appliances (large fridge, dishwasher, induction hob, oven)
- a bedroom with a double bed and a large, spacious wardrobe (for the entire wall)
- bathroom with large shower
- in the hall a built-in wardrobe with a washing machine

The apartment's equipment is completely new – new furniture, new household appliances, new floors and windows.

**RENT PRICE:** PLN 3,800.

Administrative fees and advance payments for utilities – approx. PLN 550. Electricity and excess utility consumption – payable additionally according to consumption.

Deposit: PLN 4,400

Rental for min. 12 months

As a real estate agency, we charge a commission for our brokerage services. This announcement is for information purposes only and does not constitute an offer within the meaning of Article 66 § 1 of the Civil Code

**LOCATION:** The building is located in the very center of the city – within walking distance of Rondo ONZ, Złote Tarasy, Central Railway Station, Palace of Culture. Right next to the revitalized Plac

Grzybowski.

COMMUNICATION: close to public transport – the entrance to the nearest station – Rondo ONZ – metro is just a 3-minute walk away! Numerous buses and tram lines guarantee residents convenient connections with all districts of the city,

---

**You are interested in this property**

**contact us and make an appointment.**

**Call us**

**+48 537 500 745**

**Send message**

**[info@warsawproperties.pl](mailto:info@warsawproperties.pl)**