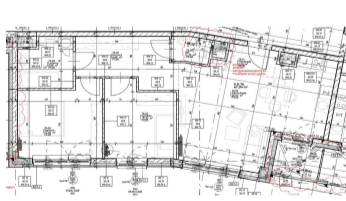
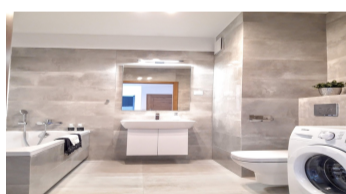
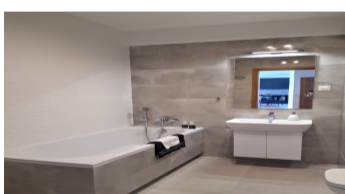
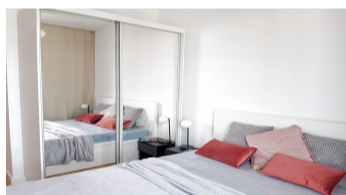


Warszawa, Praga-Północ
חוש 68 m²

68 | 3 | 5
מירטמ | מירדח | המוק

הרכשה

ריחמ 4 800 PLN
מ² הדיחיל ריחמ 71 PLN



העצה רואית:

BOHEMA ESTATE: FULLY FURNISHED 3 ROOMS | METRO SZWEDZKA | NEW ESTATE | 2 BEDROOMS + LIVING ROOM WITH KITCHEN + BATHROOM + TOILET

The apartment is available from July 1st, viewings can be arranged by appointment.

APARTMENT DESCRIPTION: This 68 m² apartment is located on the 5th floor of a new building (on the second line from Szwedzka Street). It is very bright and quiet.

- **living room with kitchenette** - equipped with a large comfortable sofa (fold-out), armchair, TV cabinet and TV
- **a modern, fully equipped kitchenette** (dishwasher, oven, induction hob, fridge, freezer) - and a table and 4 chairs

- **2 separate bedrooms with large windows** - both equipped with large beds with storage (140 cm) and large wardrobes
- **bathroom** with bathtub and washing machine
- separate **toilet** with washbasin
- small **balcony**

FEES: Rent PLN 4,800/month. Administrative fees with advance payments for utilities (water, heating, garbage collection): PLN 1,067.

Tenant pays electricity based on usage. Parking space in the underground garage: PLN 200/month.

Deposit: PLN 5,800

The tenant pays for electricity based on consumption, as well as any underpayments resulting from water and heating consumption (settled annually based on administrative settlements). As a real estate agency, we charge a commission for our brokerage services. This announcement is for information purposes only and does not constitute an offer within the meaning of Article 66 § 1 of the Civil Code.

BUILDING; New building, scheduled for occupancy in 2021, in the Bohema - Strefa Praga development . Equipped with modern elevators and underground parking. Surrounding the building is a modern housing estate, with ample greenery and a children's playground.

BOHEMA - Strefa Praga is a unique urban development project that aligns with the revitalization program of Warsaw's Praga district. It is being built on the site of the 19th-century Pollena cosmetics factory on Szwedzka Street . Here, residential, commercial, office, and cultural spaces intertwine, creating a new quality of life.

Residents will find a wealth of amenities and attractions to enhance their daily lives. Residential buildings, offices, shops, cafes, service outlets, and entertainment venues are being built on the over four-hectare site, and the 19th-century factory building will be given new life. It will be a public space designated for artistic activities, such as concerts, performances, and an outdoor cinema. Numerous squares with diverse character, a wide shopping avenue, and the expansive area surrounding the chimney will soon ensure that this place will be filled with crowds.

TRANSPORT: The new SZWEDZKA metro station and bus stops are located nearby . Nearby, the city's main thoroughfares - Solidarności Avenue and Żaba Junction - provide quick access to many districts of the city.

הז סכנב ויינועמ התא מאה

השיגפ ועבקו רשק ונתיא ורצ.

ונילא ורשקתה אנא
+48 537 500 745

העודה חלש
info@warsawproperties.pl